

HELPING YOUNG PEOPLE ACHIEVE THEIR POTENTIAL

SCHOOL PERFORMANCE ASSESSMENT 2006

**School: Weston Community
School**

Type: Mixed - 4 - 9 age range

Cluster: Carisbrooke



INTRODUCTION

This document is published annually by the Isle of Wight Council and is intended to provide parents and the community with a clear and independent view of each school's performance on the key national test and examination indicators relevant to its pupil age range.

The information provided will allow the school's performance to be seen in relation to that of the Island as a whole, the Cluster of which the school is a part and the national position. Information is also given on the school's targets, attendance and the expected performance of the next year group.

This assessment alone does not give the full picture of the school. Further information can be gained from the school's last OFSTED inspection report, the DfES Attainment and Achievement Tables, both current and past, and the schools own website. Links to all these sites can be found at www.eduwight.iow.gov.uk

In addition prospective parents and those wishing to know more about the school are encouraged to visit or make direct contact with it. Contact addresses and numbers can be found at www.eduwight.iow.gov.uk/schools

In some sections of this report the information is colour coded and the following key applies to all information coded in this way.

- strong performance usually better than that nationally.
- satisfactory but could easily be improved.
- area of concern usually below the Cluster, Island and National.

HEADLINES

Please note that the report for this school differs from those for all the other Isle of Wight primary schools. Weston Community School is a newly created school formed as part of a Fresh Start initiative following the closure of Totland Primary School on the same site. The results shown below represent the end of the school's first year of operation; there is no trend data over three years to show in line graph form.

Achievement of five year olds (end of Foundation Stage) in the national assessments of Early Learning Goals. An average child should score 6 points of a maximum of 8 in each aspect of each Area of Learning. The table shows the average scores across the school based on 7 pupils in 2006.

Area of Learning	Average Score
Personal, Social & Emotional Development (3 aspects) Maximum = 24	17.7
Communication, Language and Literacy (4 aspects) Maximum = 32	27.3
Mathematical Development (3 aspects) Maximum = 24	21.1
Knowledge & Understanding of the World (1 aspect) Maximum = 8	6.6
Physical Development (1 aspect) Maximum = 8	7.6
Creative Development (1 aspect) Maximum = 8	6.6
TOTAL Maximum = 104	86.9

Achievement of seven year olds (Year 2) in the national assessments in reading, writing and mathematics.

The number of pupils assessed in 2006 was 10 so each pupil counts for approximately 11%

READING	School	Cluster	Island	National
% Pupils L2+	80 (-11)	90 (0)	89 (0)	85 (0)
% Pupils L2b+	80 (+7)	83 (+4)	80 (+4)	72 (0)
% Pupils L3+	40 (+13)	36 (+3)	32 (0)	27 (0)
WRITING	School	Cluster	Island	National
% Pupils L2+	80 (-10)	92 (0)	90 (+3)	82 (0)
% Pupils L2b+	50 (+4)	78 (+6)	71 (+2)	62 (0)
% Pupils L3+	30 (+3)	26 (-6)	20 (+1)	15 (0)
MATHEMATICS	School	Cluster	Island	National
% Pupils L2+	80 (-10)	94 (-2)	95 (0)	91 (0)
% Pupils L2b+	70 (-21)	82 (-1)	82 (0)	74 (0)
% Pupils L3+	40 (+13)	32 (+4)	26 (-1)	23 (0)

Note: Level 2b is the expected level for the average child at age seven. All children who achieved Level 2b or above at age seven should achieve at least Level 4 at age eleven, unless there are specific reasons for their under-achievement, such as poor attendance.

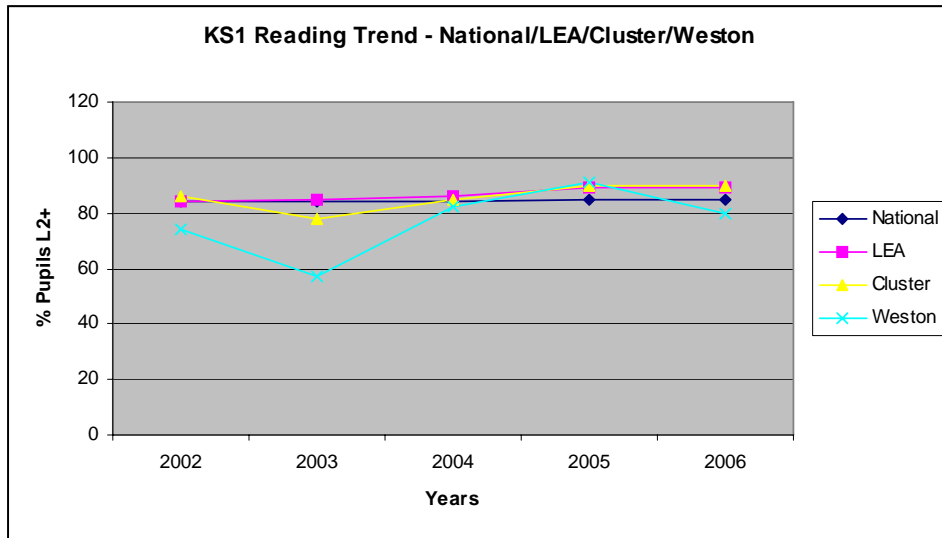
TRENDS

The following graphs give a view of the school's performance against that of the Cluster, Island and National positions.

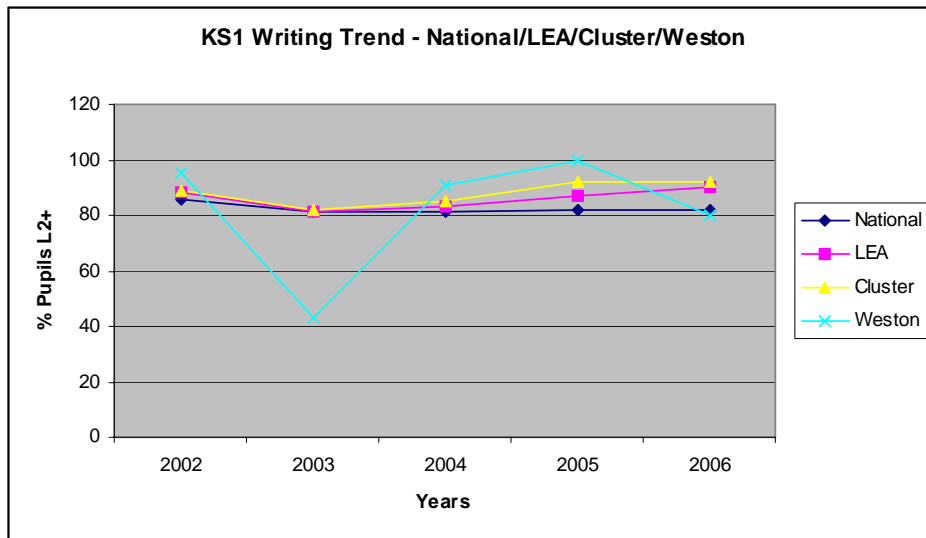
Seven Year Olds

Interpretation of school performance at level 2+

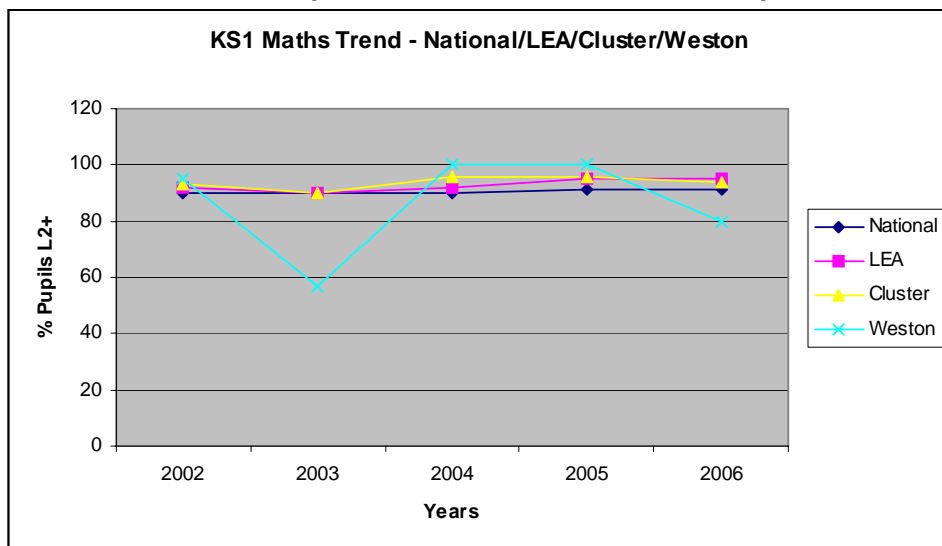
Reading – **Dip** in performance. Now **below** all three comparators.



Writing – **Dip** in performance to **below** the national

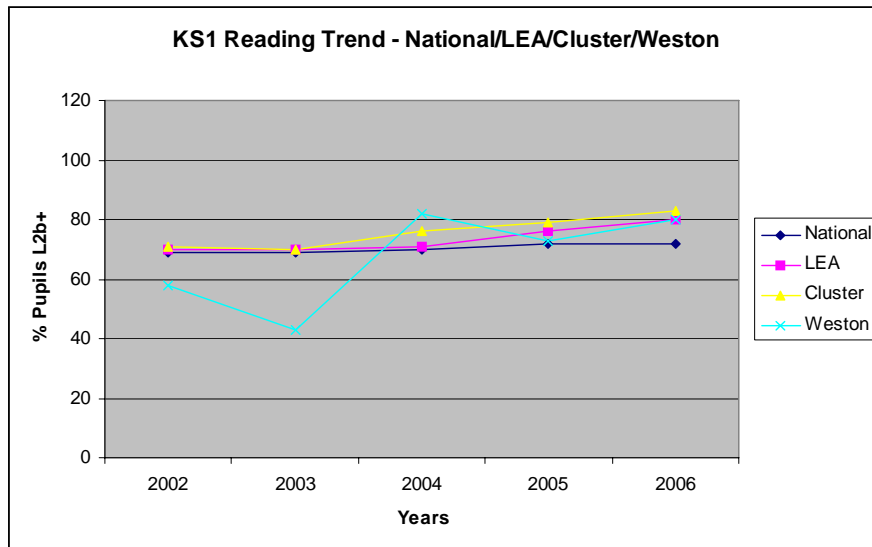


Mathematics – **Decline** in performance to **below** all three comparators

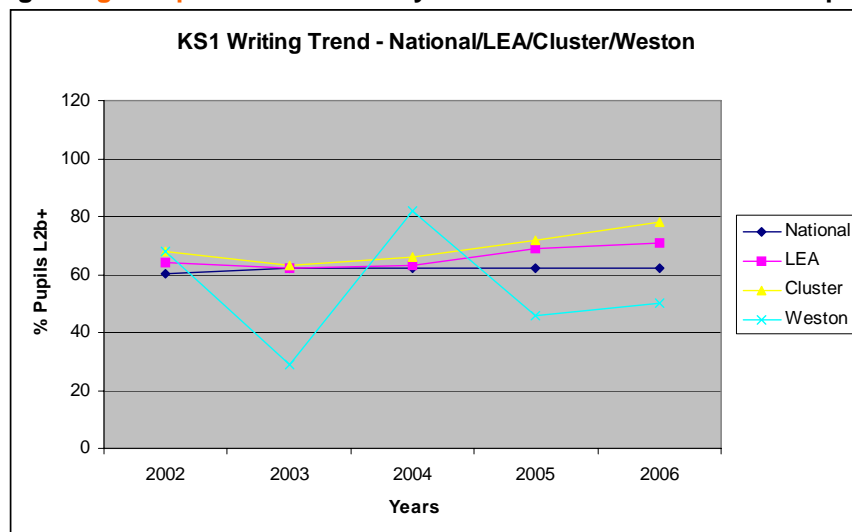


Interpretation of school performance at level 2b+

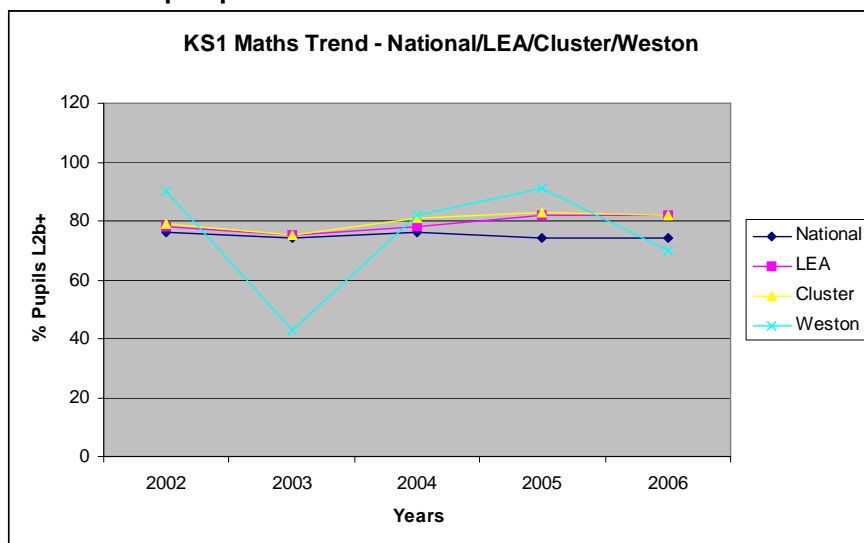
Reading – **Improvement** on the results of last year. Outcomes are **above** the national



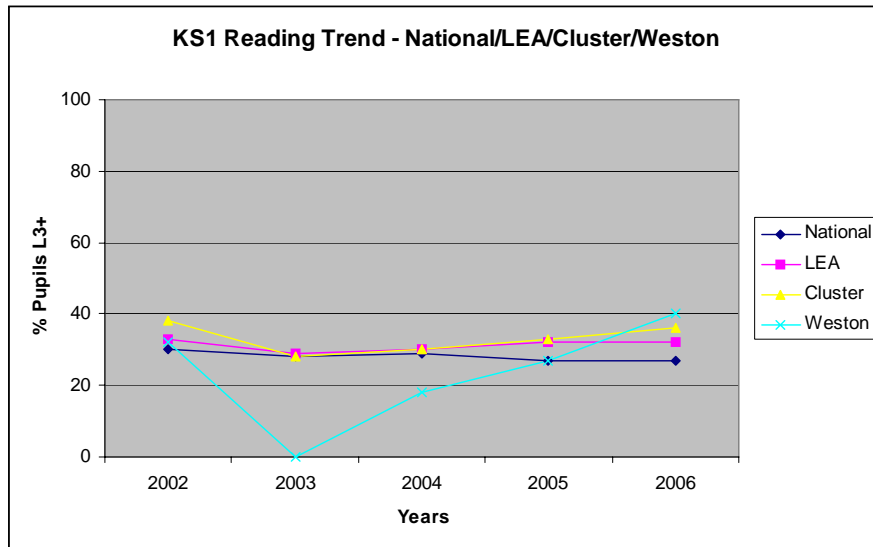
Writing – **Slight improvement** on last year but still **below** all three comparators



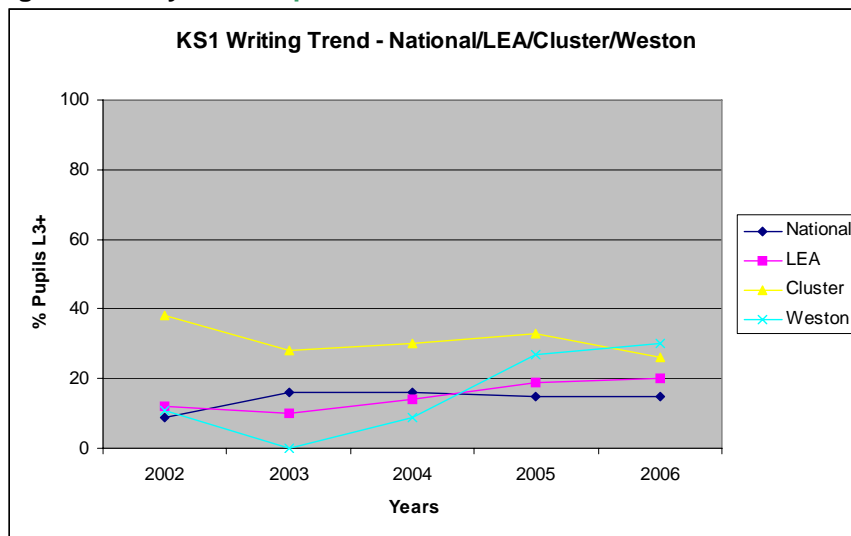
Mathematics – Dip in performance to **below** the national



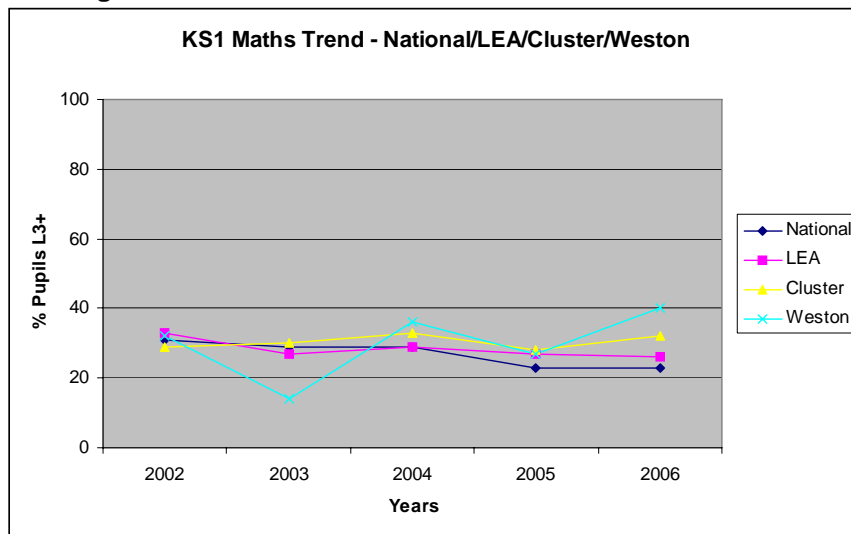
**Interpretation of school performance at level 3+
Reading – Continued **upward trend** to **above** all three comparators**



Writing – Second year of **improvement. Results now **above** all three comparators**



Mathematics – **Improvement on the results of last year. Outcomes now **above** the island average**



ATTENDANCE

Targets

The following table gives a view of the statutory performance targets the school set itself for 2006 and whether they were met.

Target Attendance	Actual Attendance	% Unauthorised absence
94.5%	92.9%	0.6%

The school's authorised absence rate is much higher than the national (5%).
Unauthorised absence is above the national average of 0.4%.